

C O R P O R A T E

M I D D L E T O N L O D G E E S T A T E





Set in 200 acres of Yorkshire parkland, this idyllic Georgian estate has been brought back to life by the owners, creative husband and wife duo James and Rebecca Allison.

Home to 56 rooms, a Michelin-recognised restaurant, Treatment Rooms and individually designed event spaces, there's plenty of scope to escape the hustle and bustle, take your team away to think creatively, launch a new product, host a talent trip, or gather for weekly or monthly check ins.

Our team can work with you as much as you need, from booking a meeting room to assisting in planning a seven-day event.

Each of the 36 bedrooms scattered amongst the parkland tells the story of the estate, with a further 15 in the Palladian Main House.





ESTATE LOCATIONS



MAIN HOUSE

Family residence, complete with four reception rooms, cellar bar, garden marquee and croquet lawn. Exclusive hire only.



WALLED GARDENS

Two-acre walled garden with Fig House and adjoining Boiler House Bar.



COACH HOUSE

Laid-back restaurant with two private dining rooms and comfy lounge.



FORGE

Roomy space with roaring fire and modern rustic interiors.



FOREST SPA

Comfortable, calm area with views overlooking the pool for creative thinkers.



FARMHOUSE

Six-bed home with kitchen/living area - perfect for the whole team and content creation.

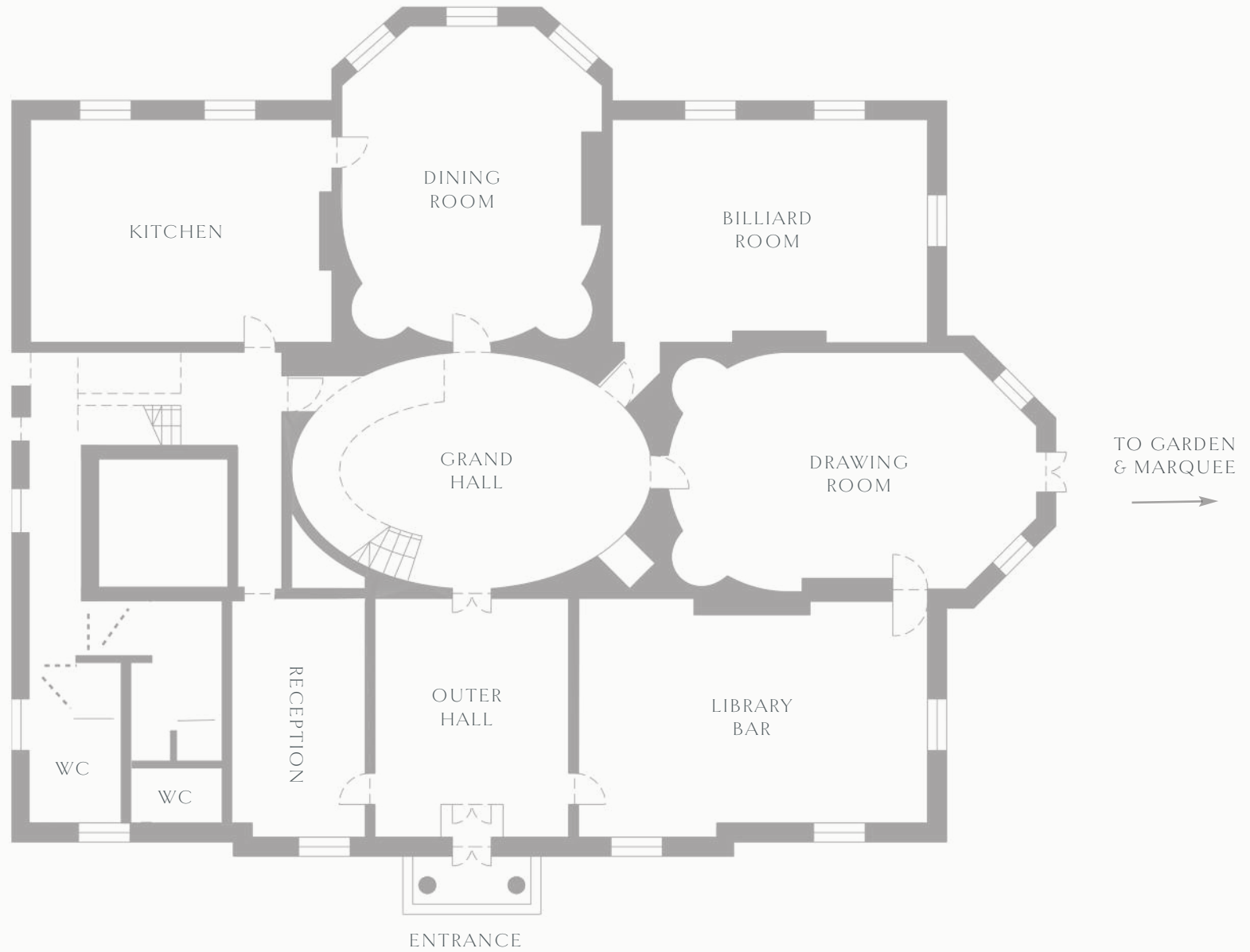


MAIN HOUSE

Designed by John Carr, this Georgian home has space for 50, with four reception rooms. Reception rooms can be hired together or individually. Large groups of up to 170 can be hosted in the Garden Marquee.



MAIN HOUSE
GROUND FLOOR PLAN



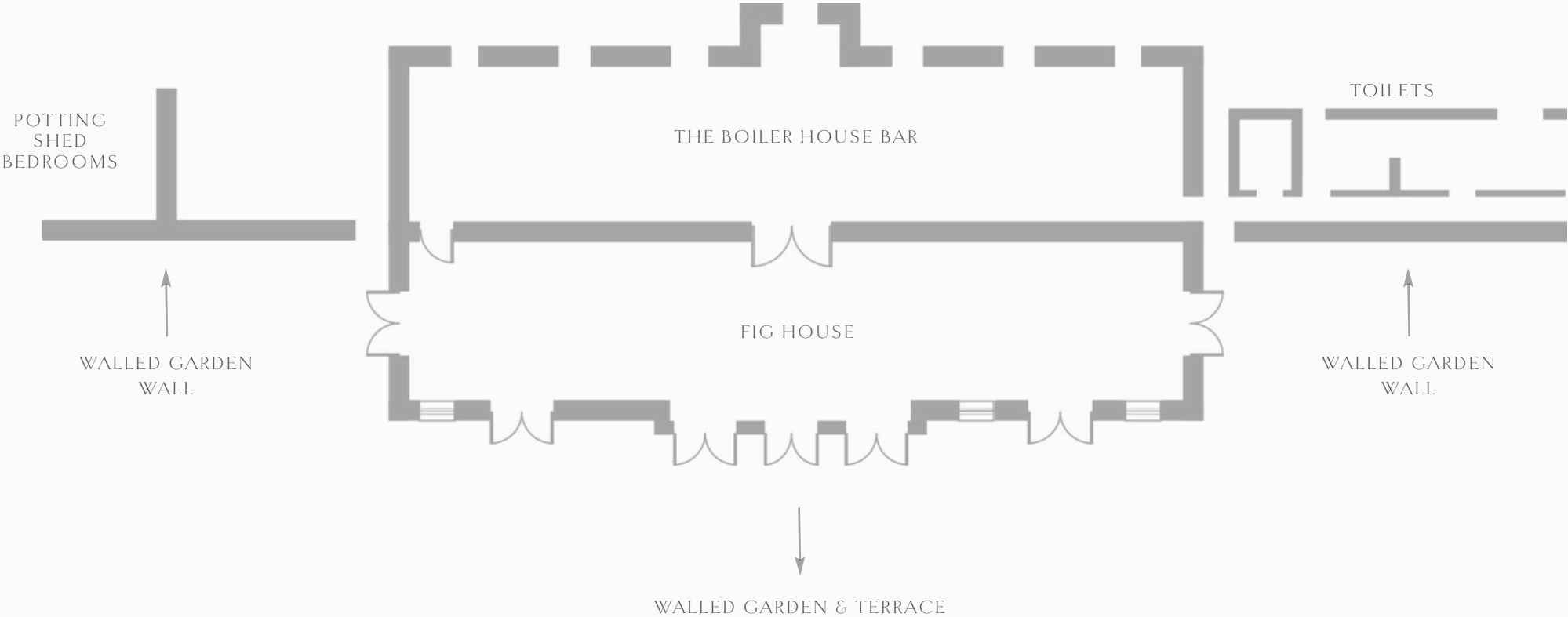


THE FIG HOUSE & WALLED GARDEN

This modern rustic space is filled with natural light. Doors open into the garden for those looking to gain a country perspective. There's space for 120, with an adjoining Boiler House bar creating a botanical breakout space, with sofas and open fires.



FIG HOUSE FLOOR PLAN



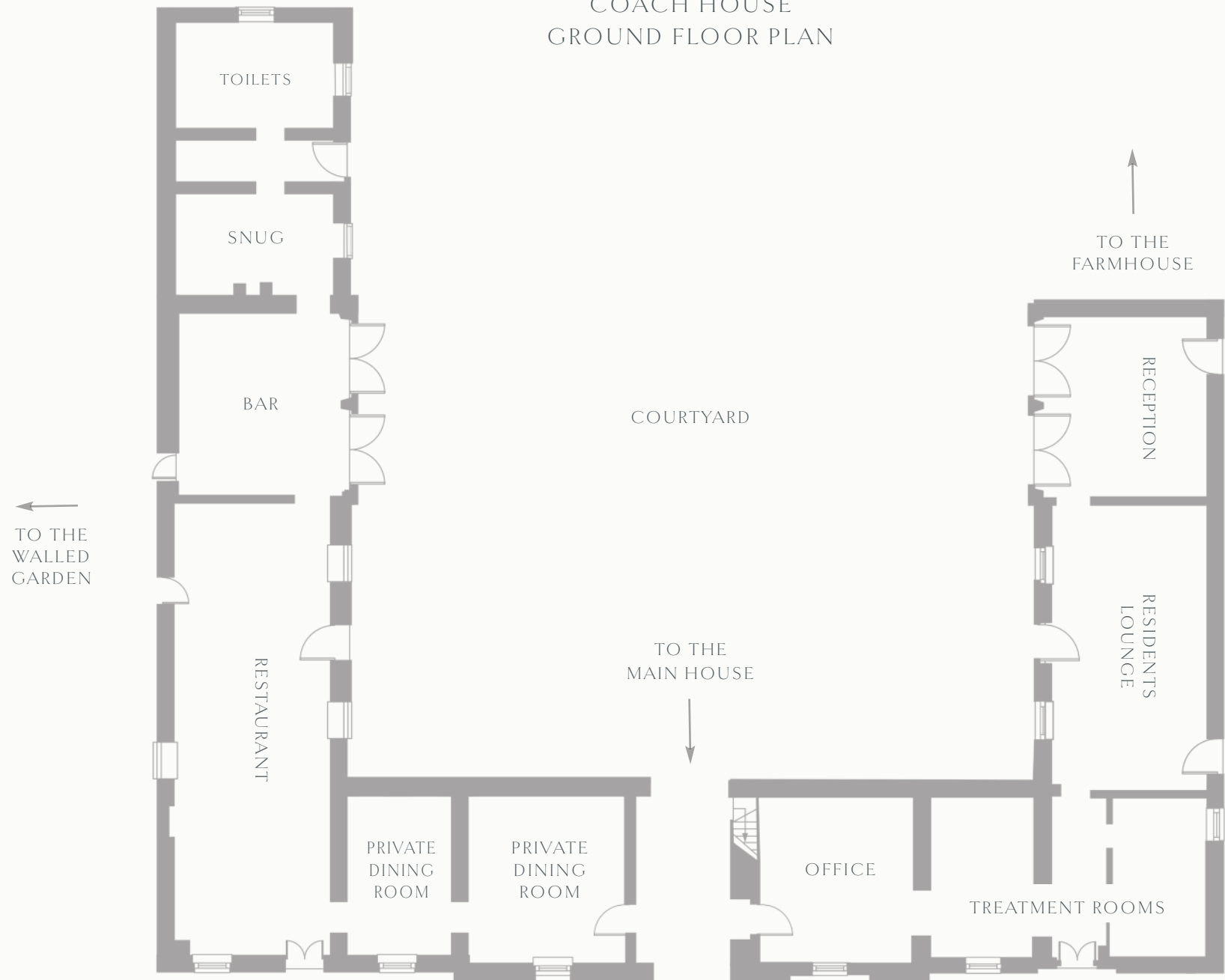


COACH HOUSE

Open from dawn until dusk, the inviting restaurant has two private dining areas for early morning meetings, working lunches and afternoon check-ins. There's space for ten.



COACH HOUSE
GROUND FLOOR PLAN

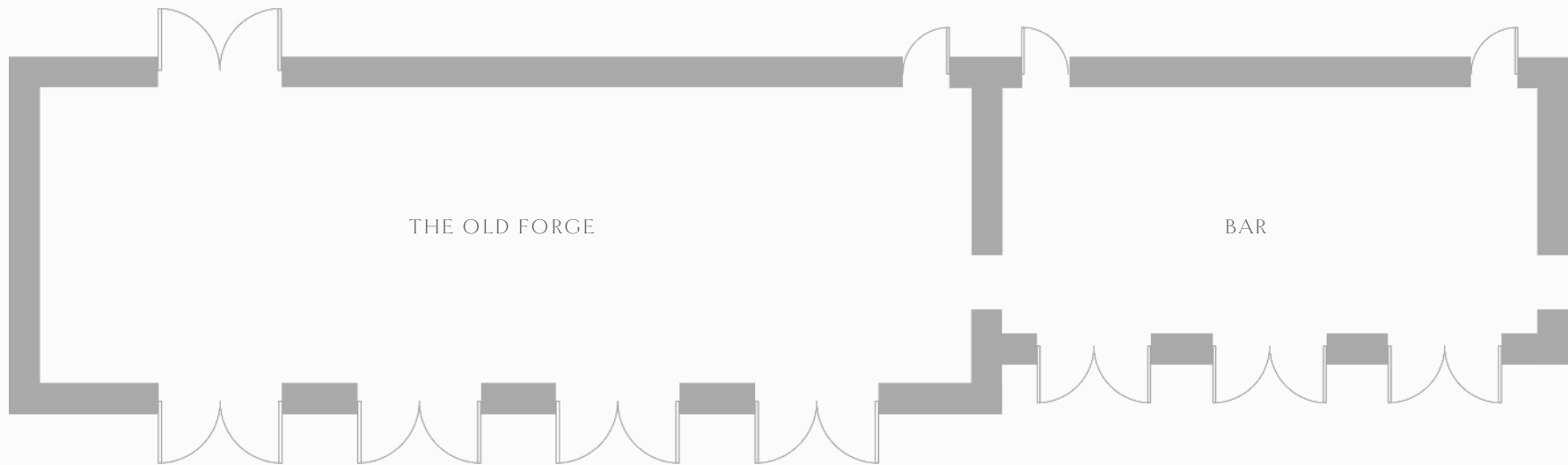


FORGE

Behind the Farmhouse, Forge combines timeless tradition with an artisanal feel. Spacious for briefing, thinking and gathering, yet cosy and inviting with a large open fire. There's a large bar adjacent, providing the welcome break with locally roasted coffees. The space seasonally transforms for wine tastings, seasonal suppers and chef's tables.



FORGE
FLOOR PLAN



THE OLD FORGE

BAR

TO THE
FARMHOUSE



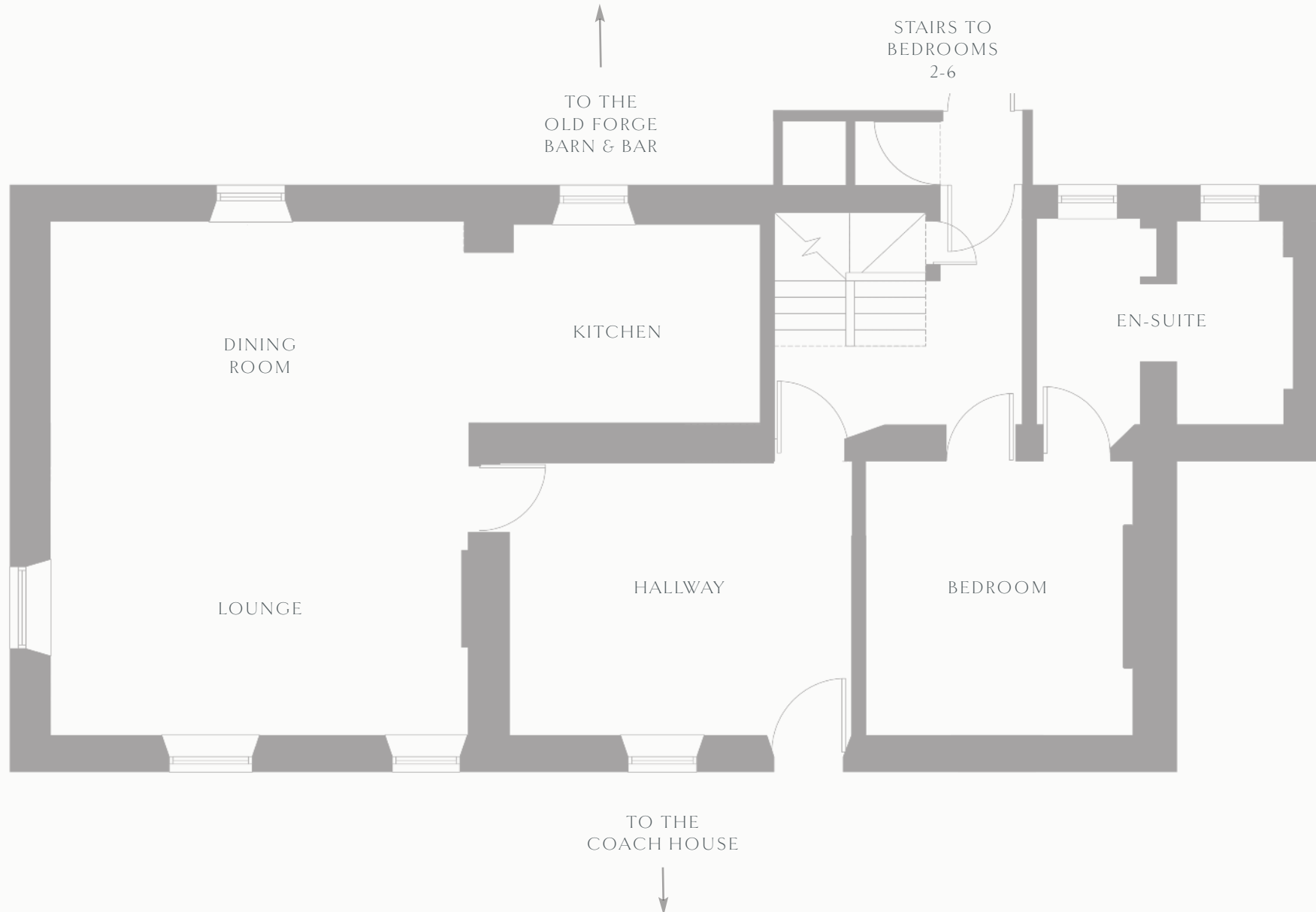


FARMHOUSE

Originally the farmers' home, now with whitewashed floors, space for 12 in the six bedrooms and an open-plan kitchen/living area, this is perfect for virtual meetings in the morning and self-catered working lunches. The spacious home is captivating for product launches, talent events and team away days.



FARMHOUSE
GROUND FLOOR PLAN





Farmhouse



EAT & DRINK

Inspired by the gardens and land, expect hearty or light ‘estate to plate’ inspired dishes served from dawn until dusk. Head chef Jake Jones and his team create seasonal menus with daily changes, depending on the delicious produce picked that morning in the garden.

Food can be served and enjoyed while you work, or in a breakout area or the restaurant.







ACCOMMODATION

Each of the 36 rooms woven into the original buildings is warm and inviting with a home-from-home feel, combining soft hues with antiques and wall art. Choose from rooms in the Coach House, Farmhouse, Dairy, Walled Gardens and Orchard. For larger event, the 15 bedrooms in the Main House can be hired too.



ACCOMMODATION

MAIN HOUSE

Estate Rooms	7
Comfy	4
Cosy	5

COACH HOUSE

Estate Rooms	1
Comfy	7
Cosy	1

FARMHOUSE

Estate Rooms	1
Cosy	5

WALLED GARDENS: POTTING SHEDS & ORCHARD

Estate Rooms	1
Comfy	3 (Hot Tub)
Comfy	2
Cosy	4 (Shepherd's Hut)

DAIRY

Cottage	1
Estate Rooms	5 (Hot Tub)
Estate Rooms	4
Comfy	1

HOPE HOUSE

Cosy	5
------	---



EVENTS

Find inspiration in the natural surroundings. Designed to bring the outdoors in, our event spaces are unique and creative, bringing a new essence to your event, from wellness retreats to one-off meetings, product launches, talent gatherings, photoshoots and more. The business team will work with you to host a meeting of two up to week event for 200.







ECO STATEMENT

Conserving the estate and the environment is where the 'eco-state' campaign comes into play. Here we share the ways of becoming more sustainable, and energy efficient. Looking forward, our aim is to be a self-sufficient estate. There are electric car charging units, we have a biomass boiler to keep each space toasty, our Coach House kitchen is electric, food miles low and plans for anaerobic digestion will fall into our 'encouraging the eco-state' campaign.



CONTACT DETAILS:

Middleton Lodge Estate

Kneeton Lane

Middleton Tyas

Richmond

North Yorkshire

DL10 6NJ

01325 377977

corporate@middletonlodge.co.uk

